

Good for the Cape

Good for the State

Important Notice & Disclaimer

No reliance To the maximum extent permitted by law, the information contained in this presentation is given without any liability whatsoever being accepted by Metro Mining Limited (Metro) or any of its related bodies corporate or their respective directors, officers, partners, employees, advisors and agents (Relevant Parties). The information contained in this presentation is not intended to constitute legal, tax or accounting advice or opinion. No representation or warranty, expressed or implied, is made as to the accuracy, completeness or thoroughness of the information, whether as to the past or future. Recipients of the document must make their own independent investigations, consideration and evaluation.

Limited disclosure This presentation contains summary information about Metro and its activities which is current at the date of this presentation. The information in this presentation is of a general nature. The presentation does not purport to contain all the information that a prospective investor may require in evaluating a possible investment in Metro nor does it contain all the information which would be required in a disclosure document prepared in accordance with the requirements of the *Corporations Act 2001* (Cth) and should not be used in isolation as a basis to invest in Metro. It should be read in conjunction with Metro's other periodic and continuous disclosure announcements lodged with the Australian Securities Exchange, which are available at www.asx.com.au.

Seek your own advice In providing this presentation, Metro has not considered the objectives, financial position or needs of the recipient. The recipient should consult with its own legal, tax or accounting advisers as to the accuracy and application of the information contained herein, and conduct its own due diligence and other enquiries in relation to such information and any investment in Metro and the recipient's objectives, financial position or needs.

No offer to acquire Metro shares The information in this presentation is not an offer or recommendation to purchase or subscribe for securities in Metro in any jurisdiction in which it would be unlawful. The distribution of this presentation in jurisdictions outside of Australia and New Zealand may be restricted by law and you should observe any such restrictions. See the 'Foreign Selling Restrictions' section of this presentation for more information. In particular, this presentation does not constitute any part of any offer to sell, or the solicitation of an offer to buy, any securities in the United States or to, or for the account or benefit of, any person in the United States. Metro securities have not been, and will not be, registered under the US Securities Act of 1933 (US Securities Act) or the securities laws of any state or other jurisdiction of the United States, and may not be offered or sold in the United States except in transactions exempt from, or not subject to, the registration requirements of the US Securities Act and applicable US state securities laws.

Cautionary note regarding reserves and resources: As an Australian company with securities listed on the ASX, Metro is required to report reserves and resources in accordance with the JORC Code. While Metro's reserve and resource estimates comply with the JORC Code, they may not comply with the relevant guidelines in other countries and, in particular, do not comply with Industry Guide 7, which governs disclosures of mineral reserves in registration statements filed with the US Securities and Exchange Commission. Information contained in this presentation describing Metro's mineral deposits may not be comparable to similar information made public by companies subject to the reporting and disclosure requirements of US securities laws. In particular, Industry Guide 7 does not recognise classifications other than proven and probable reserves and, as a result, the SEC generally does not permit mining companies to disclose their mineral resources in SEC filings. You should not assume that quantities reported as 'resources' will be converted to reserves under the JORC Code or any other reporting regime or that Metro will be able to legally and economically extract them.

Forward-looking statements: Statements and material contained in this presentation, particularly those regarding possible or assumed future performance, production levels or rates, commodity prices, resources or potential growth of Metro, industry growth or other trend projections are, or may be, forward looking statements. Such statements relate to future events and expectations and, as such, involve known and unknown risks and uncertainties. Graphs used in the presentation (including data used in the graphs) are sourced from third parties and Metro has not independently verified the information. Metro is at an early production stage, having recently achieved its first revenue from commencement of mining operations. Accordingly, matters such as production rates during ramp up, operating costs and spot sales cannot be predicted with the degree of certainty of a mature mining operation. Although reasonable care has been taken to ensure that the facts stated in this Presentation are accurate and that the opinions expressed are fair and reasonable, no reliance can be placed for any purpose whatsoever on the information contained in this document or on its completeness. Actual results and developments may differ materially from those expressed or implied by these forward looking statements depending on a variety of factors. Nothing in this Presentation should be construed as either an offer to sell or a solicitation of an offer to buy or sell shares in any jurisdiction.

Currency: All references to '\$' are to Australian currency (AUD) unless otherwise noted.

Highlights

- 1** Bauxite Hills Mine in production 10 months after construction commenced
- 2** Simple DSO operation well located in Cape York with significant competitive advantages
- 3** Compelling economics and long life mine
- 4** Independent Cape York bauxite producer in high growth commodity
- 5** Sales underpinned by a firm 4 year offtake agreement (~50% production) with Xinfu. Supplementary spot-sales to be negotiated with a range of Chinese customers
- 6** Transformational growth in China's seaborne bauxite demand driven by fundamentals
- 7** Proven Board and Management focused on shareholder value

Corporate Snapshot

Capital Structure

Key Information	Current	Post Equity Raising ¹
Share Price (15 June 2018) / Issue Price	A\$0.21	A\$0.20
Shares on Issue	1,292M	1,367M
Market Cap	A\$271.3M	A\$273.4M
Options Unlisted	33.9M	33.9M
Unrestricted Cash (31-Mar-2018)	A\$17.1M	A\$32.1M
Debt Facilities	A\$39.6M	A\$39.6M
Enterprise Value	A\$293.8M	A\$280.9M

1. Assuming \$15M raised

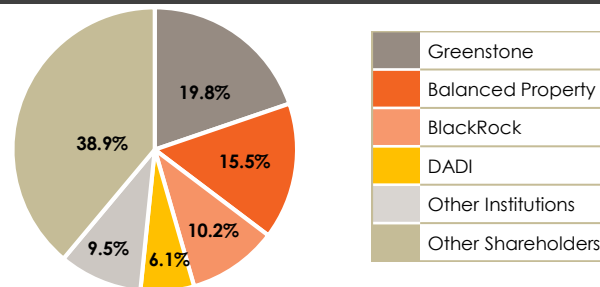
Board of Directors

Chairman	Stephen Everett
Managing Director & CEO	Simon Finnis
Non-Executive Director	Philip Hennessy
Non-Executive Director	George Lloyd
Non-Executive Director	Lindsay Ward
Non-Executive Director	Mark Sawyer
Non-Executive Director	Dongping Wang

Share Price Performance Jan 2015-May 2018



Share Register



Equity Raising Overview

Equity Raising Overview		Equity Raising Timetable	
Offer Structure & Size	<ul style="list-style-type: none"> Placement to raise approximately \$15.0 million, with the ability to take oversubscriptions to raise up to an additional \$2.5 million ("Placement") Placement of 75 to 87.5 million New Shares under Metro's 15% placement capacity under ASX Listing Rule 7.1 The New Shares issued represent circa 5.8% to 6.8% of existing issued capital 	Key Event	Time / Date (AWST)
Offer Pricing	<ul style="list-style-type: none"> Offer price of \$0.20 per New Share, which based on last close as at 15 June 2018 represents a: <ul style="list-style-type: none"> 4.8% discount to the last closing price of \$0.21; and 2.9% discount to the 5 day VWAP of \$0.206; and 12.3% discount to the 30 day VWAP of \$0.228 	Trading Halt, Announcement of Equity Raising	Monday, 18 June 2018
Ranking	<ul style="list-style-type: none"> New shares issued under the Placement will rank equally with existing Metro shares 	Announcement of the Results of the Placement	Pre-Open, Wednesday, 20 June 2018
Use of Proceeds	<ul style="list-style-type: none"> The proceeds of the Placement will increase balance sheet strength and flexibility, ensuring a strong working capital position during production ramp up and product sale negotiations 	Trading in Metro Shares Recommences	Wednesday, 20 June 2018
Pre-Commitments	<ul style="list-style-type: none"> The Lead Manager has received pre-commitments exceeding \$10 million 	Settlement of New Shares Issued Under the Placement	Wednesday, 27 June 2018
Lead Manager & Sole Bookrunner	<ul style="list-style-type: none"> Argonaut Securities Pty Limited 	Allotment and Trading of New Shares Issued Under the Placement	Thursday, 28 June 2018
Co-Manager	<ul style="list-style-type: none"> Tamesis Partners LLP 	The above timetable is indicative only and subject to change. Metro Mining, in conjunction with the Lead Manager, reserves the right to amend any or all of these events, dates and times subject to the Corporations Act 2001 (Cth), the ASX Listing Rules and other applicable laws. All times and dates are in reference to Australian Western Standard Time	

Ramp-Up Overview

Delayed Commencement	<ul style="list-style-type: none">■ Mining commencement delayed to mid-April 2018 due to an extended wet season and a site evacuation for Tropical Cyclone Nora■ Wet material caused operational and materials handling delays
Ramp-Up Accelerating	<ul style="list-style-type: none">■ Screen and barge loading commissioning issues largely resolved with minor plant modifications■ Truck and haulage fleet availability now approaching budgeted levels, regularly achieving over 10,000tpd■ Transshipment activities performing in line with expectations with ship loading rates now approaching target levels
Planned Operational Improvements Underway	<ul style="list-style-type: none">■ Commissioning of a larger barge (7,000t) has augmented the three smaller barges (3,500t)■ Mining now underway at BH1 providing greater flexibility, productivity and better product quality
Successful Shipments	<ul style="list-style-type: none">■ Marine transportation fleet performing in line with expectations■ Four vessels for Xinfu successfully departed Skardon River■ Shipments planned on a constant basis for the remainder of calendar year 2018■ Ocean freight rates have increased reflecting higher utilisation and oil prices (see slide 17)
Increasing Product Sales	<ul style="list-style-type: none">■ Attractive pricing for Xinfu sales given high alumina price index, with revenue received from three landed vessels■ Increasing buying interest in Metro's product being experienced■ Contracts for two spot sales have been finalised and negotiations are continuing with other customers
Production Guidance	<ul style="list-style-type: none">■ Product shipments for the June quarter expected to be at or around 400,000t■ CY2018 production guidance re-affirmed

Production Guidance Update

Bauxite Production Guidance (WMT)

	Jun '18 Qtr	Sept '18 Qtr	Dec '18 Qtr	2018 –CY	2019 –CY
Bauxite Mined ('000t)	430 – 440	825 – 875	710 – 760	1,965 – 2,075	3,000
Bauxite Shipped ('000t)	390 – 400	825 – 875	750 – 800	1,965 – 2,075	3,000

- Bauxite shipped in June quarter expected to reach lower end of previously stated guidance
- Guidance for bauxite shipped revised upwards for the September and December quarters
- Although start up was delayed, production ramp-up continues
- Guidance incorporates delayed start-up and recent commissioning issues, now largely resolved
- Recruitment of site based staff is now largely complete with Indigenous employees comprising approximately 34% of the workforce



Shipments Arriving in China

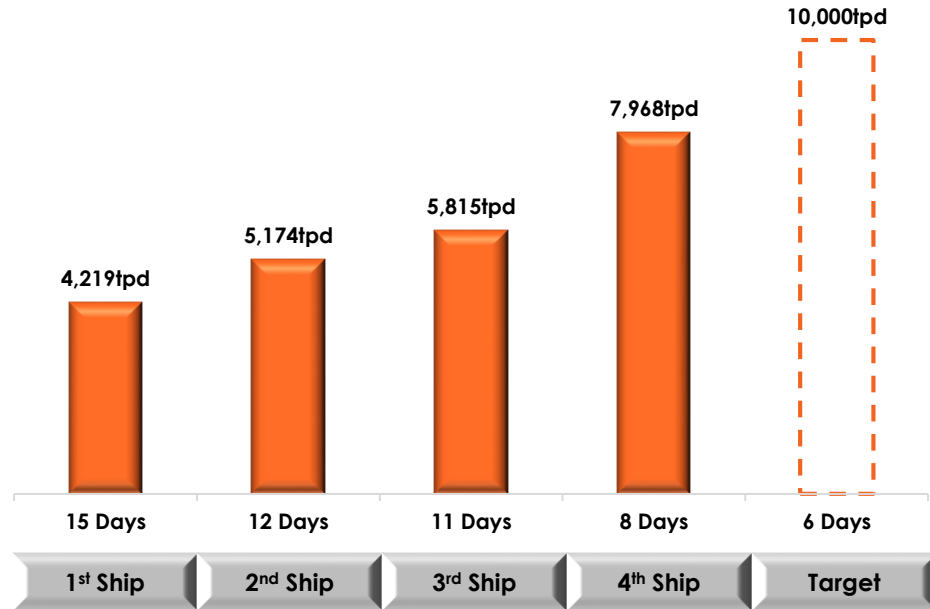


- First ship sailed 7 May with 62,000 tonnes and arrived China 19 May.
- Three Xinfeng shipments have successfully arrived in China and revenue already received.
- A fourth ship is due to arrive in China shortly
- Fifth Ship is currently being loaded
- Contracts finalised for 2 Spot sales
- Increasing buying interest in Metro's product being experienced post first shipment

Ship Loading Rates Improving

- Four ships successfully departed for China
- Daily average ship loading rates trending higher
- Total days to load ships decreasing
- Target daily loading rate at 10,000 tonnes achieved in initial loading of ship five

Average Daily Barge Loading Rates vs Total Ship Loading Days



Increasing Production Profile

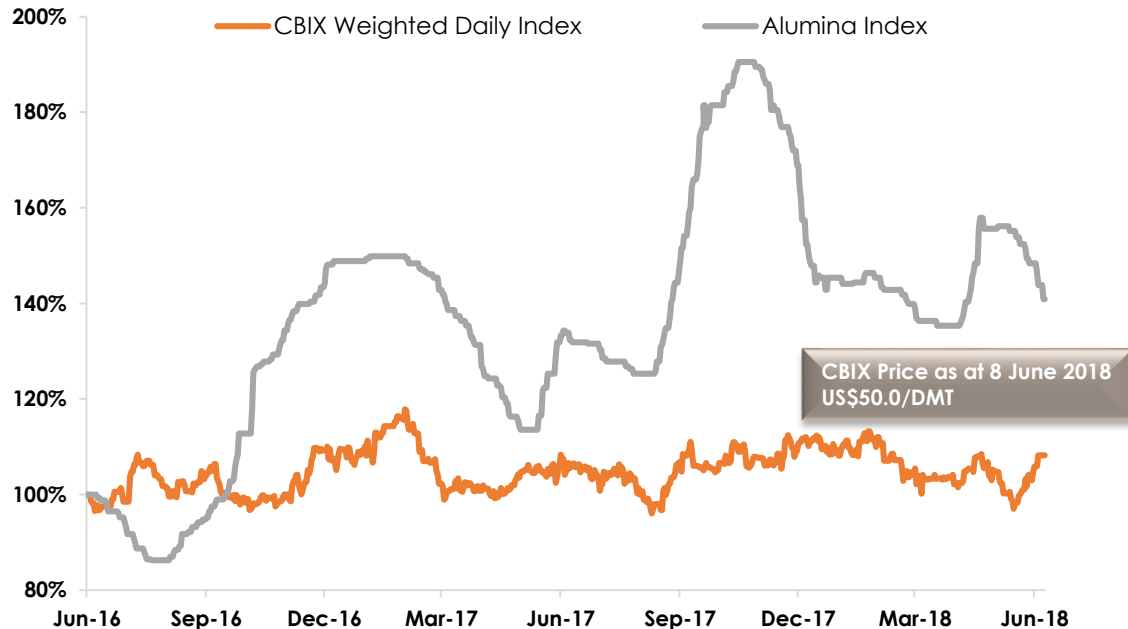


- Ramp up over 4 years reflects development of the customer base. Production in excess of existing off-take subject to spot sales and/or new off-take
- Expansionary capital expenditure estimated at approximately \$37M¹ (note: to be confirmed through updating the BFS)
- Significant unit cost improvement at higher production rates
- Existing infrastructure has been built to facilitate higher production rates

1. ASX Release 15 Mar 2017

Favourable Price Dynamic

CBIX Weighted Daily Price vs Alumina Price Indexed

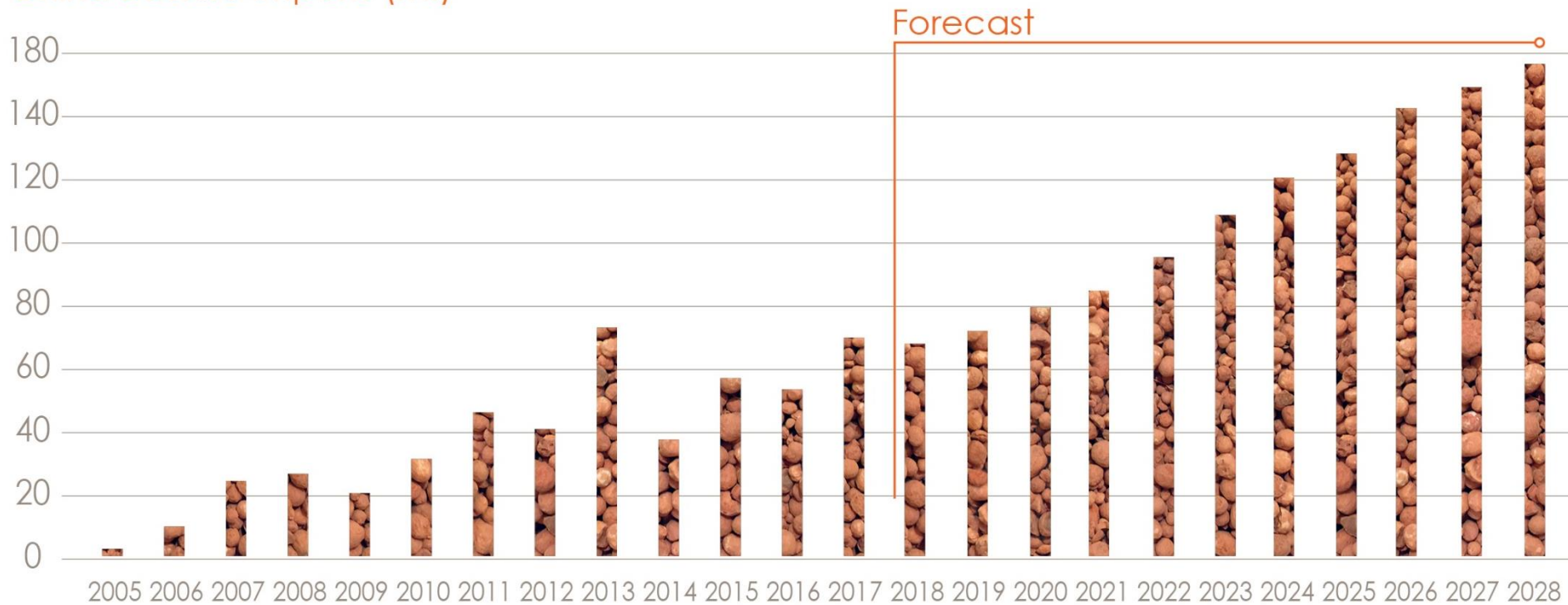


- Alumina prices have outperformed the CBIX Bauxite Price over the past 2 years
- Xinfa off-take pricing is linked to the Alumina price index providing Metro an attractive sales price relative to spot bauxite market prices
- Spot sales currently being negotiated based on bauxite market prices (note: these are expected to be at a discount to the CBIX price reflecting differences in product specifications)

Source: Aladdiny & CRU

China Demand Outlook Remains Strong

China Bauxite Imports (Mt)



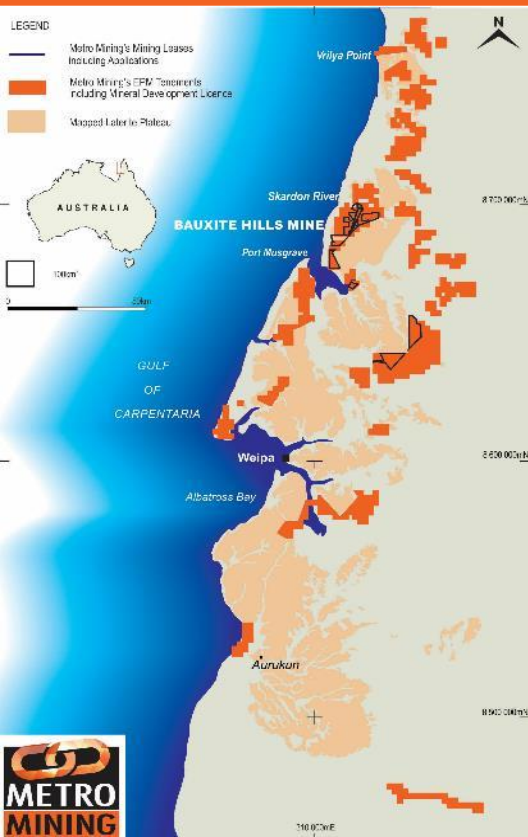
Source: CM Group

China Shipping Advantage



- Location, Location, Location
- Metro's low cost shipping is a sustainable cost advantage to China relative to competing bauxite producers, particularly Guinea
- Cape York Bauxite is well known in, and well received by Chinese market
- Low working capital requirements, given speed to market
- Freight rates have increased reflecting higher ship utilisation and oil prices. However, as ocean freight increases, Metro's cost advantage also increases

Significant Regional Exploration Upside



- Metro's exploration exposure covers >1,800km² of holdings (including Bauxite Hills) on Cape York
- All tenements are well located on the lateritic plateaus that host bauxite mineralisation
- Close proximity to the coast
- Potential to duplicate Bauxite Hills – internal growth
- Ongoing exploration work planned for CY2018
 - ▶ Reconnaissance sampling
 - ▶ Drilling of priority targets
- Identify other opportunities on Cape York and in other prospective locations

Positive Community Relationships

Ankamuthi Elders George Williams and Richard Woosup and Metro's Environmental heritage Support Officer Barunah "Bruno" Sagiba



- ▶ "Welcome to Country Ceremony" held at Bauxite Hills Mine site in April 2018.
- ▶ Major Ankamuthi family groups plus Metro's Chair Stephen Everett, Managing Director Simon Finnis, Project Director Mike O'Brien, Community Manager, Colleen Fish and Metro employees attended.
- ▶ Metro Managing Director Simon Finnis acknowledged the traditional owners past and present with the Official Welcome Ceremony performed by Ankamuthi Elder George Williams.



Ankamuthi Elder, George Williams, is welcomed by Metro personnel

Summary – A Compelling Story

1

Metro has significant advantages and is backed by leading partners

2

Strong seaborne bauxite fundamentals in China drive positive outlook

3

Recent achievements have delivered platform for value creation

4

Exciting period ahead with production commenced in April 2018

5

Long-life mine ready to supply the burgeoning bauxite market

6

Australia's leading independent bauxite producer with strategic appeal

Disclaimer



FORWARD LOOKING STATEMENT

Statements and material contained in this ASX Announcement, particularly those regarding possible or assumed future performance, production levels or rates, commodity prices, resources or potential growth of Metro Mining Limited, industry growth or other trend projections are, or may be, forward looking statements. Such statements relate to future events and expectations and, as such, involve known and unknown risks and uncertainties. Graphs used in this ASX Announcement (including data used in the graphs) are sourced from third parties and Metro Mining has not independently verified the information. Metro Mining is at an early development stage and while it does not currently have an operating bauxite mine it is taking early and preliminary steps (such as but not limited to Prefeasibility studies etc.) that are intended to ultimately result in the building and construction of an operating mine at its project areas. Although reasonable care has been taken to ensure that the facts stated in this ASX Announcement are accurate and or that the opinions expressed are fair and reasonable, no reliance can be placed for any purpose whatsoever on the information contained in this document or on its completeness. Actual results and developments may differ materially from those expressed or implied by these forward-looking statements depending on a variety of factors. Nothing in this ASX Announcement should be construed as either an offer to sell or a solicitation of an offer to buy or sell shares in any jurisdiction.

For Further Information

Contact: Simon Finnis – Chief Executive Officer & Managing Director | Chief Financial Officer – Duane Woodbury
Ph: +61 (0) 7 3009 8000 | **Head Office:** Lvl 2, 247 Adelaide Street, Brisbane Q 4000 | **GPO Box 10955, Brisbane Q 4000**